

## FOR LEASE

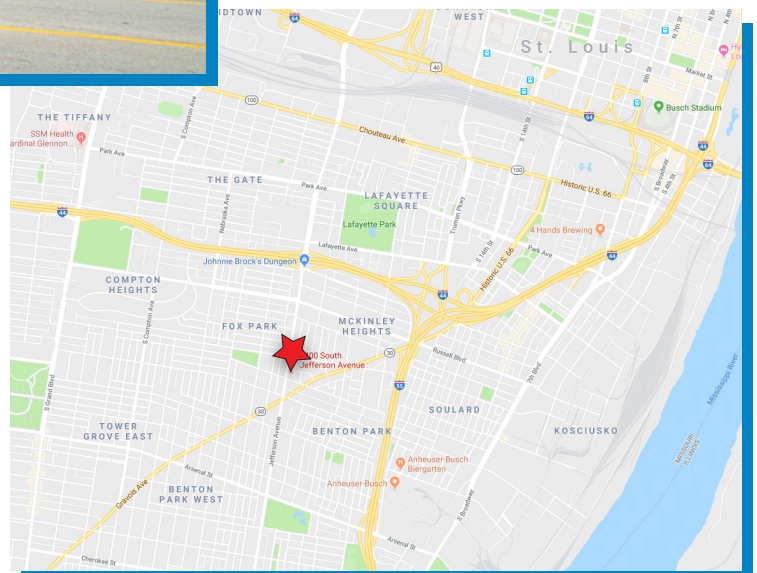
2400 S. Jefferson Ave.  
St. Louis, MO 63104



### Lease Space Available at the Jefferson Underground!

This renovated auto dealership offers tenants the opportunity to be in a truly unique building which includes great window lines, off street parking lots and a third floor event space with patio.

Available Space includes loft style office and first floor retail.



- Office Space #204: 2,000 SF @ 2,400/month  
2<sup>nd</sup> Floor Loft Style Office
- Off Street Parking
- Retail/Restaurant Space: 5,850<sup>+</sup> SF
- Storefront/Special Use Space & Warehouse Space is Available
- Close to Highways I-64/40, I-44 & I-55

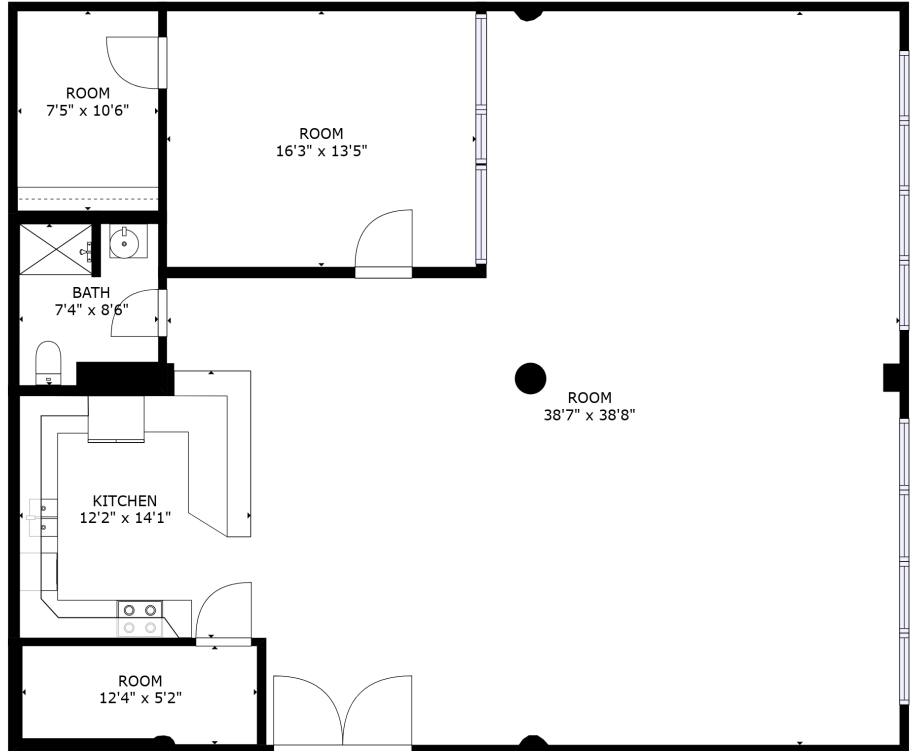
For More Information, Contact:

**Lease Rates - Contact Agent**

**Ken Wedberg**

Office: 314-446-7540 • Cell: 314-374-6670  
[Wedberg@realtyexchangeweb.com](mailto:Wedberg@realtyexchangeweb.com)

Information contained herein has been obtained from the owner of the property or other sources. The Brokers do not guarantee the accuracy of this information. Sellers and Brokers make no representation as to the environmental or other conditions of the property and recommend that Purchaser(s) investigate fully.



For More Information, Contact:

**Ken Wedberg**

314-446-7540 Office

314-374-6670 Cell

wedberg@realtyexchangeweb.com

Floor	Type of Space	SF Avail.
1	Retail/Restaurant	5,850 <sup>+/-</sup>
2	Office - 2 <sup>nd</sup> Floor	2,000

Information contained herein has been obtained from the owner of the property or other sources. The Brokers do not guarantee the accuracy of this information. Sellers and Brokers make no representation as to the environmental or other conditions of the property and recommend that Purchaser(s) investigate fully.