

FOR LEASE

THE CHOUTEAU CENTER

133 South 11th Street • St. Louis, MO 63102



- Office suites available / fully furnished and unfurnished
- Available for short term lease: 3,533 SF on Floor 2; 4,878 SF on Floor 3; 4,251 SF on Floor 5
- Closest office building to both the civil and the federal courts
- Adjacent to a parking structure
- Short blocks from Ballpark Village and Enterprise Center
- A stone's throw from Highway 64/40

Price: Call Broker

Ken Wedberg

Office: 314-446-7540

Cell: 314-374-6670

wedberg@realtyexchangeweb.com

Sam Vandergriff

Office: 314-647-0130 ext. 4055

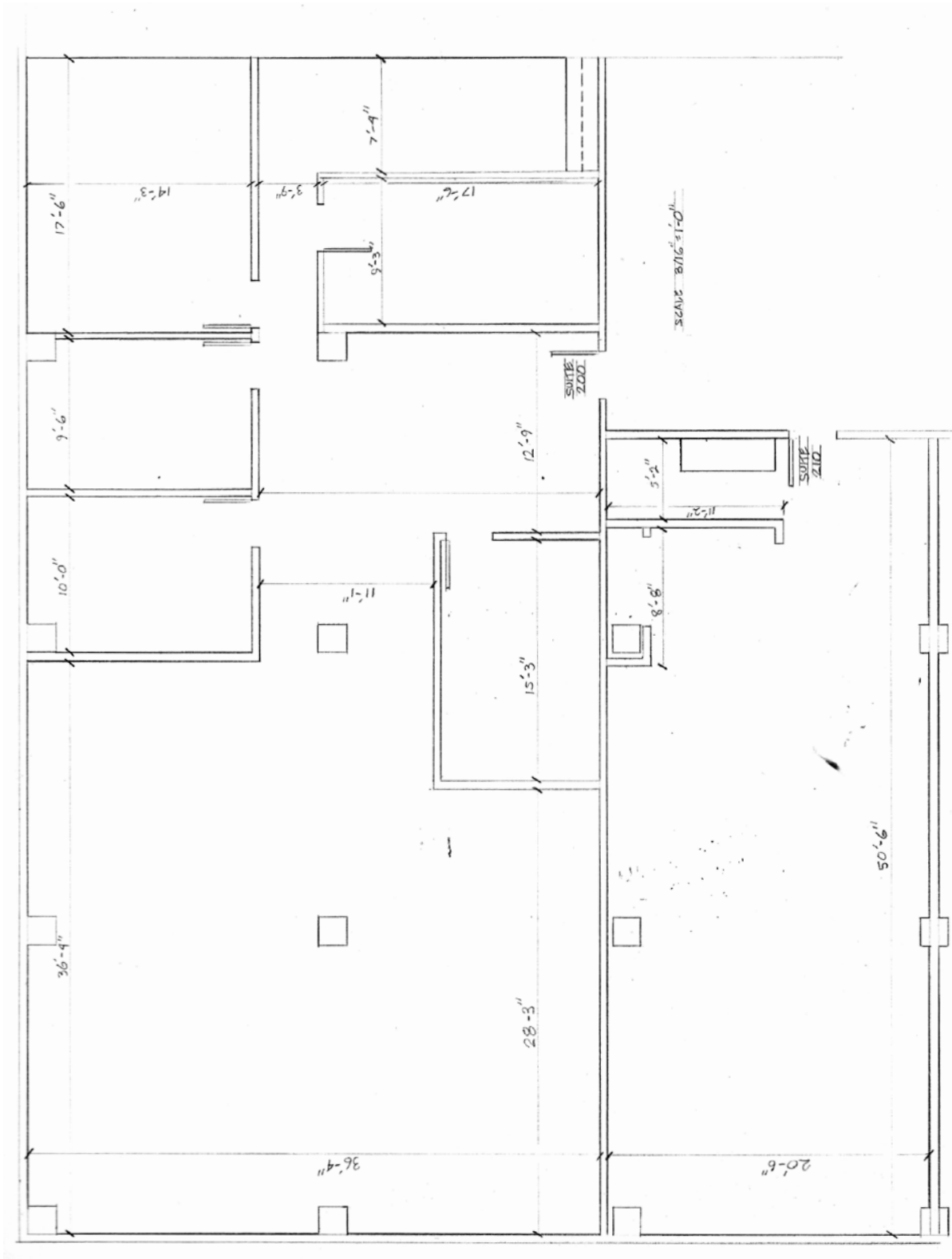
Cell: 314-307-9336

vandergriff@realtyexchangeweb.com

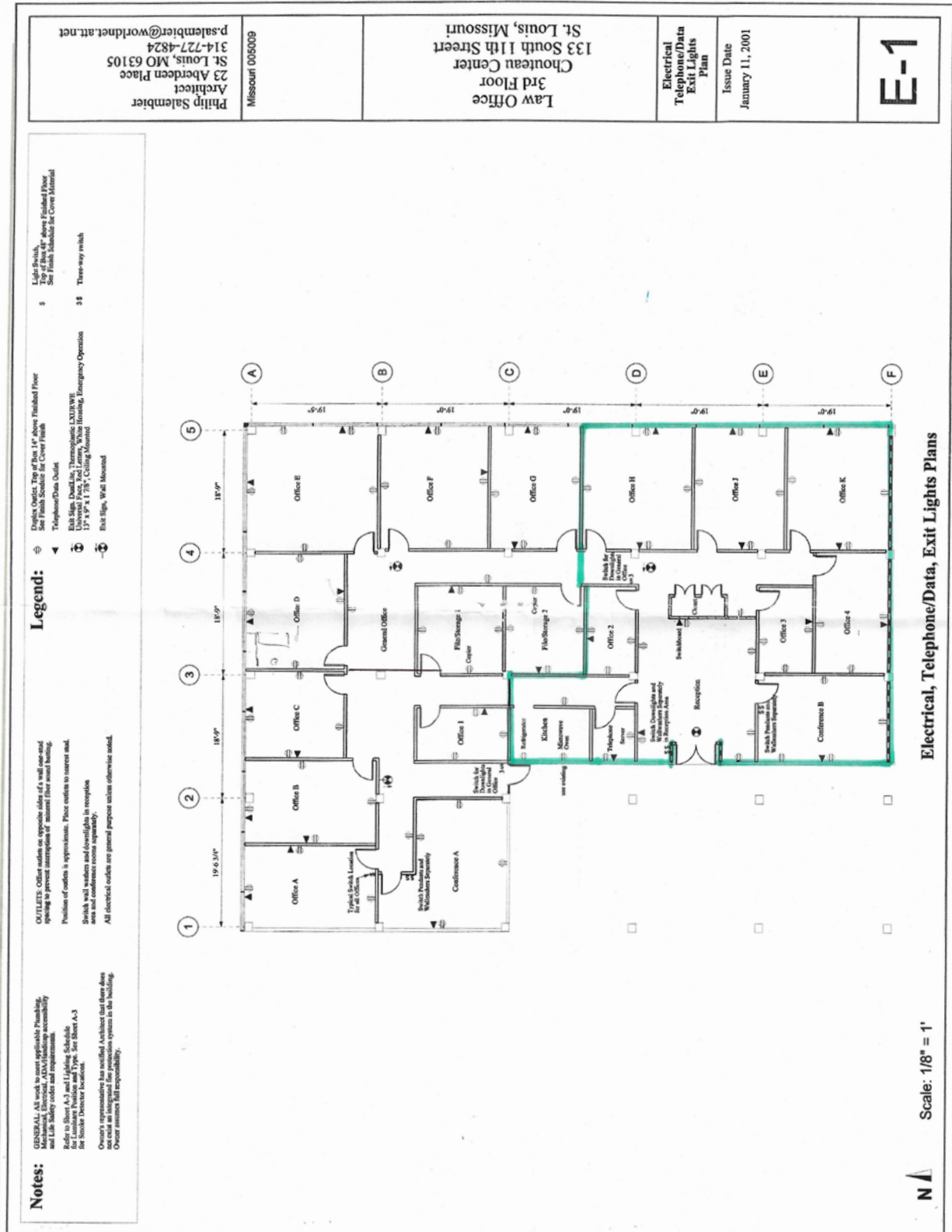
Information contained herein has been obtained from the owner of the property or other sources. The Brokers do not guarantee the accuracy of this information. Sellers and Brokers make no representation as to the environmental or other conditions of the property and recommend that Purchaser(s) investigate fully.

2203 South Big Bend Blvd. • St. Louis, MO • 314-647-2220 • 1-800-592-4502 • www.realtyexchangeweb.com

2ND FLOOR



3RD FLOOR

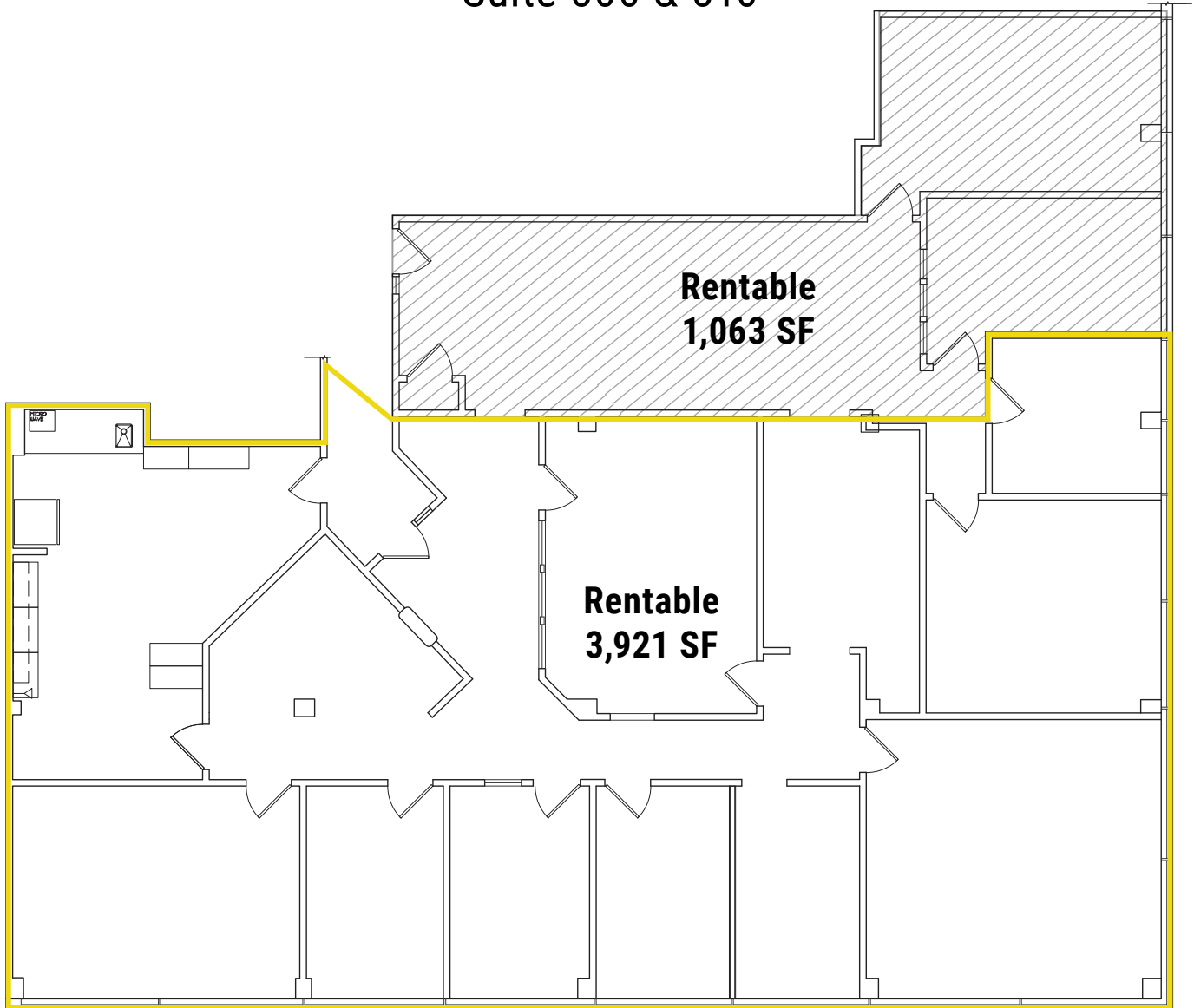


Scale: 1/8" = 1'

Electrical, Telephone/Data, Exit Lights Plans

5TH FLOOR

Suite 500 & 510



FLOOR PLAN
SCALE: 1/8" = 1'-0"