

FOR SALE

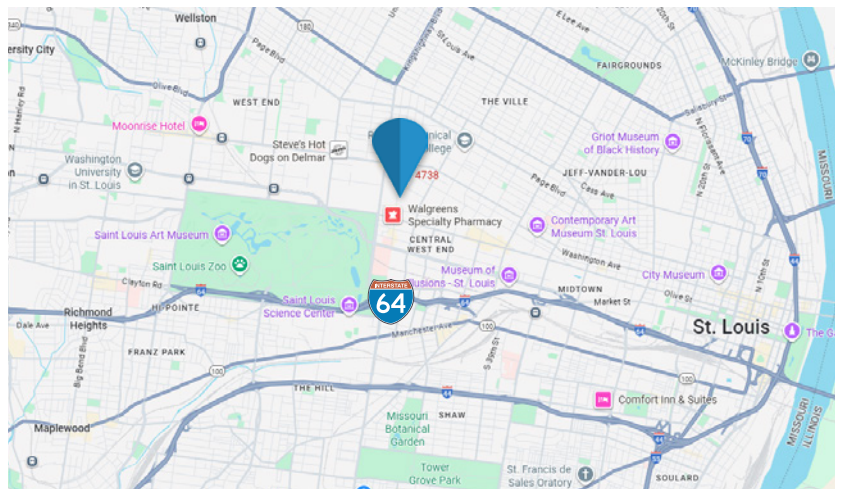
Commercial Office / Live Work Space

4738 McPherson Ave
St. Louis, MO 63108



- Recently Fully Renovated
- All Systems and Appliances Updated
- 1,170 SF Condo on 2nd Floor
- Open Off Street Parking in Rear
- 2024 Taxes \$1,870
- Condo Fee \$603/Month

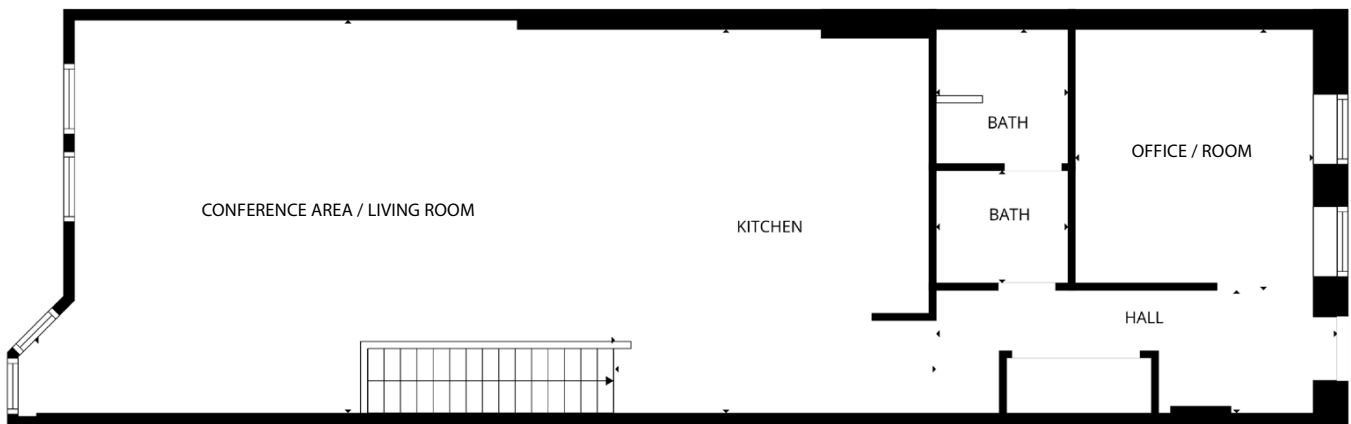
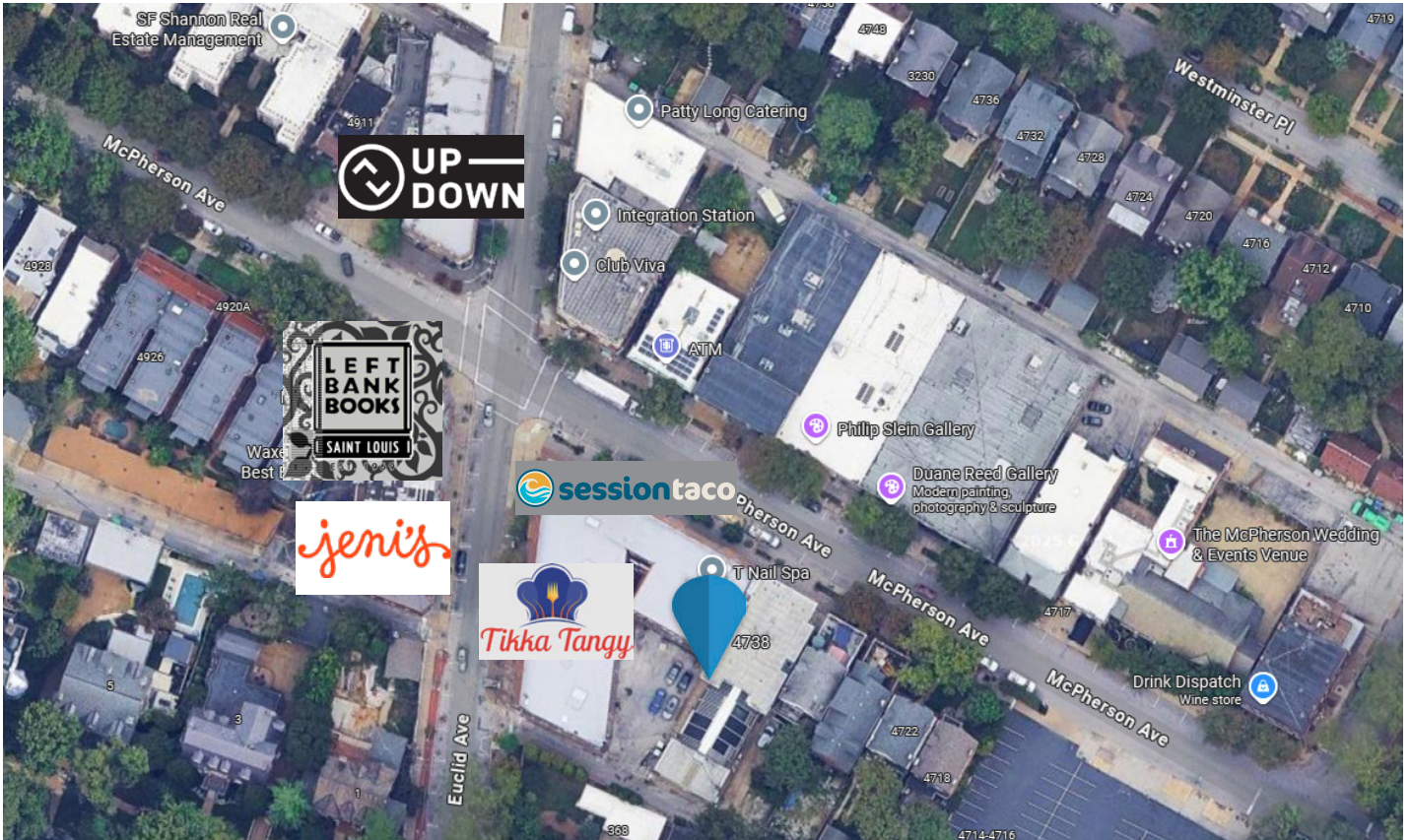
\$320,000



Ken Wedberg
Office: 314-446-7540
Cell: 314-374-6670
wedberg@realtyexchangeweb.com

Information contained herein has been obtained from the owner of the property or other sources. The Brokers do not guarantee the accuracy of this information. Sellers and Brokers make no representation as to the environmental or other conditions of the property and recommend that Purchaser(s) investigate fully.

THE PROPERTY



1,170 SF
 PER TAX RECORD

Ken Wedberg
 Office: 314-446-7540
 Cell: 314-374-6670
wedberg@realtyexchangeweb.com



Demographics



11,932
HOUSEHOLDS



19,967
POPULATION



1.61
AVERAGE
HOUSEHOLD SIZE



\$116,779
AVERAGE
HOUSEHOLD INCOME



\$479,485
AVERAGE
HOUSING VALUE



94.5%
EMPLOYMENT



78.8%
WHITE COLLAR
WORKERS

Ken Wedberg

Office: 314-446-7540

Cell: 314-374-6670

wedberg@realtyexchangeweb.com



Ken Wedberg

Office: 314-446-7540

Cell: 314-374-6670

wedberg@realtyexchangeweb.com



RealtyExchangeWeb.com